

Label Wizard Help Index

[Overview](#)

[Guide to Label Wizard](#)

[What's New](#)

How to..

[Register Label Wizard](#)

[Obtain Product Support](#)

Commands

[File menu](#)

[Edit menu](#)

[View menu](#)

[Panel menu](#)

[Clone menu](#)

[Window menu](#)

[Help menu](#)

File menu commands

The File menu offers the following commands:

<u>New</u>	Creates a new document.
<u>Open</u>	Opens an existing document.
<u>Close</u>	Closes an opened document.
<u>Save</u>	Saves an opened document using the same file name.
<u>Save As</u>	Saves an opened document to a specified file name.
<u>Print</u>	Prints a document.
<u>Print</u>	Displays the document on the screen as it would appear printed.
<u>Preview</u>	
<u>Print Setup</u>	Selects a printer and printer connection.
<u>Exit</u>	Exits Label Wizard.

Edit menu commands

The Edit menu offers the following commands:

<u>Undo</u>	Reverse previous editing operation.
<u>Cut</u>	Deletes data from the document and moves it to the clipboard.
<u>Copy</u>	Copies data from the document to the clipboard.
<u>Paste</u>	Pastes data from the clipboard into the document.
<u>Select All</u>	Select the entire document.
<u>Find...</u>	Find the specified text.
<u>Replace...</u>	Replace specific text with different text.

View menu commands

The View menu offers the following commands:

<u>Toolbar</u>	Shows or hides the toolbar.
<u>Status Bar</u>	Shows or hides the status bar.

Panel menu commands

The Panel menu offers the following commands; which enable you to change the characteristics of the text contained within the active panel.

<u>Fonts...</u>	Open the <u>Font dialog box</u> for the active panel
<u>Enlarge Font</u>	Enlarge the font size of the active panel one point.
<u>Reduce Font</u>	Reduce the font size of the active panel one point.
<u>Left</u>	Left align the text within the active panel.
<u>Center</u>	Center align the text within the active panel.
<u>Right</u>	Right align the text within the active panel.
<u>Paragraph Mode</u>	Toggle between list and paragraph mode.
<u>Margins...</u>	Set the active panel's margins
<u>Regular</u>	Unselect all font formatting.
<u>Bold</u>	Toggle bold formatting within the active panel.
<u>Italic</u>	Toggle <i>italic</i> formatting within the active panel.
<u>Underline</u>	Toggle <u>underlining</u> within the active panel.
<u>Strikeout</u>	Toggle strikeout formatting within the active panel.

Clone menu commands

The Clone menu offers the following commands, which enable you to quickly copy the active panel's attributes to duplicate panels. Duplicate panels are panels that share the same name, because they share the same functionality.

<u>Font</u>	Copy font to duplicate panels.
<u>Text</u>	Copy text to duplicate panels.
<u>Alignment</u>	Copy alignment to duplicate panels.

Window menu commands

The Window menu offers the following commands, which enable you to arrange multiple views of multiple documents in the application window:

<u>Cascade</u>	Arranges windows in an overlapped fashion.
<u>Tile Horizontal</u>	Arranges windows in non-overlapped tiles.
<u>Tile Vertical</u>	Arranges windows in non-overlapped tiles.
<u>Arrange Icons</u>	Arranges icons of closed windows.
<u>Split</u>	Split the active window into panes.
<u>Next Pane</u>	Switch to the next window pane.
<u>Window 1,</u> <u>2, ...</u>	Goes to specified window.

Help menu commands

The Help menu offers the following commands, which provide you assistance with this application:


<u>Index</u>	Offers you an index to topics on which you can get help.
<u>Using Help</u>	Provides general instructions on using help.
<u>About</u>	Displays the version number of this application.

New command (File menu)

Use this command to create a new document in Label Wizard.

You can open an existing document with the Open command.

Shortcuts

Toolbar: 
Keys: CTRL+N

File New dialog box

This dialog box has a listbox filled with all the labels contained in the default label template. At the bottom of the dialog box is the description of the currently selected label in the listbox and the name of the current label template file.

To open another template file then select the **Open Template** button. This will open the Open Template dialog box.

To make that template file the default template file, then select the **Set As Default** button. The next time the File New dialog box appears it will contain the labels of that label template file.

Open Template dialog box


This dialog box works just like the [File Open dialog box](#). At the bottom of the dialog box is the name of the template file and its description.

Open command (File menu)

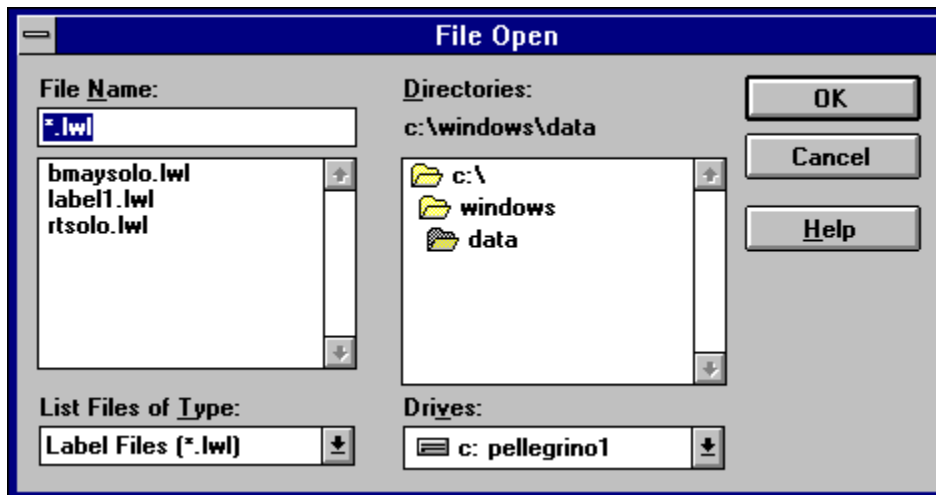
Use this command to open an existing document in a new window. Label Wizard displays the File Open dialog box to allow you to choose the existing document. Label Wizard allows you to have more than one open document. Use the Window menu to switch among the multiple open documents. See Window 1, 2, ... command.

You can create new documents with the New command.

Shortcuts

Toolbar: 
Keys: CTRL+O

File Open dialog box



The following options allow you to specify which file to open:

File Name

Type or select the filename you want to open. This box lists files with the extension you select in the List Files of Type box.

List Files of Type

Select the type of file you want to open:

- Label Wizard Label (*.lwl)
- All Files (*.*)

Drives

Select the drive in which Label Wizard stores the file that you want to open.

Directories

Select the directory in which Label Wizard stores the file that you want to open.

Network...

Choose this button to connect to a network location, assigning it a new drive letter.

Close command (File menu)

Use this command to close all windows containing the active document. Label Wizard suggests that you save changes to your document before you close it. If you close a document without saving, you lose all changes made since the last time you saved it. Before closing an untitled document, Label Wizard displays the Save As dialog box and suggests that you name and save the document.


You can also close a document by using the Close icon on the document's window, as shown below:



Save command (File menu)

Use this command to save the active document to its current name and directory. When you save a document for the first time, Label Wizard displays the Save As dialog box so you can name your document. If you want to change the name and directory of an existing document before you save it, choose the Save As command.

Shortcuts

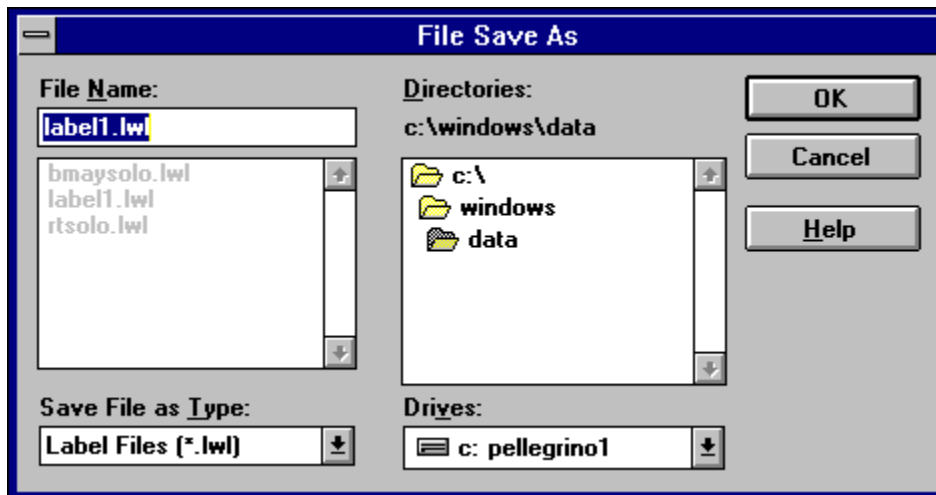
Toolbar: 
Keys: CTRL+S

Save As command (File menu)

Use this command to save and name the active document. Label Wizard displays the Save As dialog box so you can name your document.

To save a document with its existing name and directory, use the Save command.

File Save As dialog box



The following options allow you to specify the name and location of the file you're about to save:

File Name

Type a new filename to save a document with a different name. A filename can contain up to eight characters and an extension of up to three characters. Label Wizard adds the extension you specify in the Save File As Type box.

Drives

Select the drive in which you want to store the document.

Directories

Select the directory in which you want to store the document.

Network...

Choose this button to connect to a network location, assigning it a new drive letter.

1, 2, 3, 4 command (File menu)

Use the numbers and filenames listed at the bottom of the File menu to open the last four documents you closed. Choose the number that corresponds with the document you want to open.

Exit command (File menu)

Use this command to end your Label Wizard session. You can also use the Close command on the application Control menu. Label Wizard prompts you to save documents with unsaved changes.

Shortcuts

Mouse: Double-click the application's Control menu button.



Keys: ALT+F4

Undo command (Edit menu)

Use this command to reverse the last editing action, if possible. The Undo command is unavailable if you cannot reverse your last action.

Shortcuts

Keys: CTRL+Z or
ALT-BACKSPACE

Redo command (Edit menu)


<< Write application-specific help here. >>

Cut command (Edit menu)

Use this command to remove the currently selected data from the Edit Pane and put it on the clipboard. This command is unavailable if there is no data currently selected.

Cutting data to the clipboard replaces the contents previously stored there.

Shortcuts


Toolbar: 
Keys: CTRL+X

Copy command (Edit menu)

Use this command to copy selected data onto the clipboard. This command is unavailable if there is no data currently selected.

Copying data to the clipboard replaces the contents previously stored there.


Shortcuts

Toolbar: 
Keys: CTRL+C

Paste command (Edit menu)

Use this command to insert a copy of the clipboard contents at the insertion point. This command is unavailable if the clipboard is empty.

Shortcuts

Toolbar: 
Keys: CTRL+V

Toolbar command (View menu)

Use this command to display and hide the Toolbar, which includes buttons for some of the most common commands in Label Wizard, such as File Open. A check mark appears next to the menu item when the Toolbar is displayed.

See [Toolbar](#) for help on using the toolbar.

Toolbar



The toolbar is displayed across the top of the application window, below the menu bar. The toolbar provides quick mouse access to many tools used in Label Wizard,

To hide or display the Toolbar, choose Toolbar from the View menu (ALT, V, T).

Click To



Open a new document.



Open an existing document. Label Wizard displays the Open dialog box, in which you can locate and open the desired file.



Save the active document or template with its current name. If you have not named the document, Label Wizard displays the Save As dialog box.



Print preview the active document.



Print the active document.



Remove the selected data from the document and stores it on the clipboard.



Copy the selection to the clipboard.



Insert the contents of the clipboard at the insertion point.



Open the Font dialog box for the active panel.



Increase the size of the active panel's font by one point size.



Reduce the size of the active panel's font by one point size.



Toggle **bold** formatting of the active panel's font.



Toggle *italic* formatting of the active panel's font.



Toggle underlining of the active panel's font.



Toggle ~~strikeout~~ formatting of the active panel's font.



Left align text within the active panel.



Center align text within the active panel.



Right align text within the active panel.



Toggle between list mode and paragraph mode.



Set the active panel's left and right margins.



Display Label Wizard's about box.



Obtain context sensitive help.

Status Bar command (View menu)

Use this command to display and hide the Status Bar, which describes the action to be executed by the selected menu item or depressed toolbar button, and keyboard latch state. A check mark appears next to the menu item when the Status Bar is displayed.

See [Status Bar](#) for help on using the status bar.

Status Bar



The status bar is displayed at the bottom of the Label Wizard window. To display or hide the status bar, use the Status Bar command in the View menu.

The left area of the status bar describes actions of menu items as you use the arrow keys to navigate through menus. This area similarly shows messages that describe the actions of toolbar buttons as you depress them, before releasing them. If after viewing the description of the toolbar button command you wish not to execute the command, then release the mouse button while the pointer is off the toolbar button.

The right areas of the status bar indicate which of the following keys are latched down:

Indicator	Description
CAP	The Caps Lock key is latched down.
NUM	The Num Lock key is latched down.
SCRL	The Scroll Lock key is latched down.

Fonts command (Panel menu)

Use this command to display the Font dialog box. The Font dialog box allows you to change the font of the active panel.

Shortcut

Toolbar:



Enlarge Font command (Panel menu)

Use this command to enlarge the font size of the active panel by one point size.

Shortcut

Toolbar:



Reduce Font command (Panel menu)

Use this command to reduce the font size of the active panel by one point size.

Shortcut

Toolbar:



Left command (Panel menu)

Use this command to left align the text within the active panel.

Shortcut

Toolbar:



Center command (Panel menu)

Use this command to center align the text within the active panel.

Shortcut

Toolbar:



Right command (Panel menu)

Use this command to right align the text within the active panel.

Shortcut

Toolbar:



Paragraph Mode command (Panel menu)

Use this command to toggle between list mode (default) and paragraph mode.

Shortcut

Toolbar:



Explanation of List mode and Paragraph mode:

List mode implements word-wrap by indenting the word wrapped lines. This is the default mode for each panel. Space characters after each line of text in the Edit Pane are disregarded when displayed in the panel. If you want to include spaces after a line of text I suggest you add character 160 to the end of the line. This is accomplished by holding down the ALT key and typing 0160 on the numeric keypad.

Paragraph mode implements a normal word-wrap. Each line of text in the Edit Pane is displayed as the next sentence in the panel. Two spaces are placed in between each sentence (line of text you type in the Edit Pane) in the panel. Paragraph mode allows you to type out paragraphs of text. In paragraph mode, no space is disregarded, linefeed and carriage return characters (those invisible characters at the end of each line) are turned into spaces and \n is used to start a new line.

The first two sentences of these two paragraphs would look like this in the Edit Pane:

List mode implements word-wrap by indenting the word wrapped lines.
This is the default mode for each panel.\n

Paragraph mode implements a normal word-wrap.
Each line of text in the Edit Pane is displayed as the next sentence in the panel.

Margins command (Panel menu)

Use this command to set the right and left margin for the text within the active panel. Label Wizard displays the Margins dialog box for your input.

Shortcut

Toolbar:



Margins dialog box

This dialog box allows you to enter the right and left margins for the active panel. The units are equivalent to 1/32 of an inch. A value of 32 would provide you with a margin of one inch. The maximum margin size is 320 units or 10 inches. The combined left and right margin cannot be greater than the width of the panel.

Regular command (Panel menu)

Use this command to unselect all font formatting.


Shortcut

Key: F5

Bold command (Panel menu)

Use this command to toggle **bold** formatting of the active panel's font.


Shortcuts

Toolbar: 
Keys: CTRL+B

Italic command (Panel menu)

Use this command to toggle *italic* formatting of the active panel's font.


Shortcuts

Toolbar: 
Keys: CTRL+I

Underline command (Panel menu)

Use this command to toggle underlining of the active panel's font.

Shortcuts

Toolbar: 
Keys: CTRL+U

Strikeout command (Panel menu)

Use this command to toggle ~~strikeout~~ formatting of the active panel's font.

Shortcut

Toolbar:



Font command (Clone menu)

This command allows you to copy the font of the active panel to all of its duplicate panels.

Text command (Clone menu)

This command allows you to copy the text of the active panel to all of its duplicate panels.

Alignment command (Clone menu)

This command allows you to copy the alignment of the active panel to all of its duplicate panels. The panel's alignment is a combination of its mode (Paragraph or List), its justification (Left, Center or Right) and its margins.

Duplicate panels are panels that share the same panel name. Panels that serve the same function are usually duplicate panels

New command (Window menu)

Use this command to open a new window with the same contents as the active window. You can open multiple document windows to display different parts or views of a document at the same time. If you change the contents in one window, all other windows containing the same document reflect those changes. When you open a new window, it becomes the active window and is displayed on top of all other open windows.

Cascade command (Window menu)

Use this command to arrange multiple opened windows in an overlapped fashion.

Tile command (Window menu)

Use this command to arrange multiple opened windows in a non-overlapped fashion.

Tile Horizontal command (Window menu)

Use this command to vertically arrange multiple opened windows in a non-overlapped fashion.

Tile Vertical command (Window menu)

Use this command to arrange multiple opened windows side by side.

Arrange Icons command (Window menu)

Use this command to arrange the icons for minimized windows at the bottom of the main window. If there is an open document window at the bottom of the main window, then some or all of the icons may not be visible because they will be underneath this document window.

1, 2, ... command (Window menu)

Label Wizard displays a list of currently open document windows at the bottom of the Window menu. A check mark appears in front of the document name of the active window. Choose a document from this list to make its window active.

Index command (Help menu)

Use this command to display the opening screen of Help. From the opening screen, you can jump to step-by-step instructions for using Label Wizard and various types of reference information.

Once you open Help, you can click the Contents button whenever you want to return to the opening screen.

Using Help command (Help menu)

Use this command for instructions about using Help.

About command (Help menu)

Use this command to display the copyright notice and version number of your copy of Label Wizard.

Shortcut


Toolbar:



Context Help command

Use the Context Help command to obtain help on some portion of Label Wizard. When you choose the Toolbar's Context Help button, the mouse pointer will change to an arrow and question mark. Then click somewhere in the Label Wizard window, such as another Toolbar button. The Help topic will be shown for the item you clicked.

Shortcuts

Toolbar: 
Keys: SHIFT+F1

Title Bar

Label Wizard - [Label1]

The title bar is located along the top of a window. It contains the name of the application and document.

To move the window, drag the title bar. Note: You can also move dialog boxes by dragging their title bars.

A title bar may contain the following elements:

- Application Control-menu button
- Document Control-menu button
- Maximize button
- Minimize button
- Name of the application
- Name of the document



Restore button

Scroll bars

Displayed at the right and bottom edges of the document window. The scroll boxes inside the scroll bars indicate your vertical and horizontal location in the document. You can use the mouse to scroll to other parts of the document.

Size command (System menu)

Use this command to display a four-headed arrow so you can size the active window with the arrow keys.



After the pointer changes to the four-headed arrow:

1. Press one of the DIRECTION keys (left, right, up, or down arrow key) to move the pointer to the border you want to move.
2. Press a DIRECTION key to move the border.
3. Press ENTER when the window is the size you want.

Note: This command is unavailable if you maximize the window.

Shortcut

Mouse: Drag the size bars at the corners or edges of the window.

Move command (Control menu)

Use this command to display a four-headed arrow so you can move the active window or dialog box with the arrow keys.



Note: This command is unavailable if you maximize the window.


Shortcut

Keys: CTRL+F7

Minimize command (application Control menu)

Use this command to reduce the Label Wizard window to an icon.


Shortcut

Mouse: Click the minimize icon  on the title bar.
Keys: ALT+F9

Maximize command (System menu)

Use this command to enlarge the active window to fill the available space.

Shortcut

Mouse: Click the maximize icon  on the title bar; or double-click the title bar.

Keys: CTRL+F10 enlarges a document window.

Next Window command (document Control menu)

Use this command to switch to the next open document window. Label Wizard determines which window is next according to the order in which you opened the windows.

Shortcut

Keys: CTRL+F6

Previous Window command (document Control menu)

Use this command to switch to the previous open document window. Label Wizard determines which window is previous according to the order in which you opened the windows.

Shortcut

Keys: SHIFT+CTRL+F6

Close command (Control menus)

Use this command to close the active window or dialog box.

Double-clicking a Control-menu box is the same as choosing the Close command.



Note: If you have multiple windows open for a single document, the Close command on the document Control menu closes only one window at a time. You can close all windows at once with the Close command on the File menu.

Shortcuts

Keys: CTRL+F4 closes a document window
 ALT+F4 closes the Label Wizard application window or dialog box

Restore command (Control menu)

Use this command to return the active window to its size and position before you chose the Maximize or Minimize command.

Switch to command (application Control menu)

Use this command to display a list of all open applications. Use this "Task List" to switch to or close an application on the list.

Shortcut

Keys: CTRL+ESC

Dialog Box Options

When you choose the Switch To command, you will be presented with a dialog box with the following options:

Task List

Select the application you want to switch to or close.

Switch To

Makes the selected application active.

End Task

Closes the selected application.

Cancel

Closes the Task List box.

Cascade

Arranges open applications so they overlap and you can see each title bar. This option does not affect applications reduced to icons.

Tile

Arranges open applications into windows that do not overlap. This option does not affect applications reduced to icons.

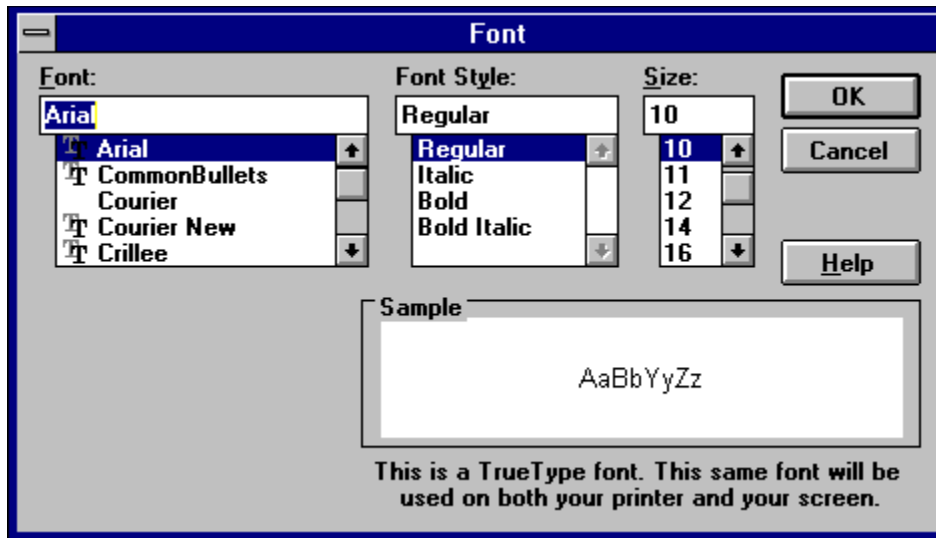
Arrange Icons

Arranges the icons of all minimized applications across the bottom of the screen.

Ruler command (View menu)

<< Write application-specific help here. >>

Font dialog box



The following options allow you to specify the font you want to use:

Font

Type or select the font you want to use. This box lists all the screen fonts you currently have installed on your system.

Font Style

Select the style of font you want to use.

Size

Select the point size of the font. A point is 1/72 of an inch.

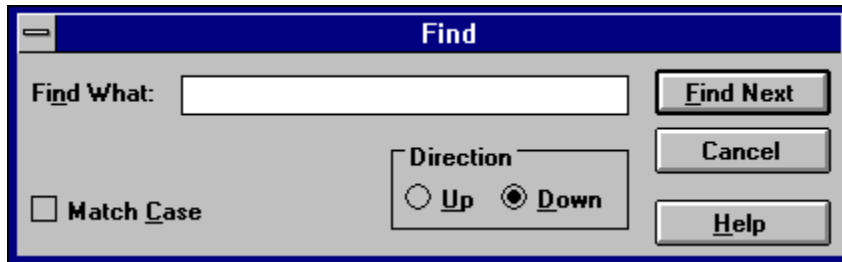
Choose Color dialog box

<< Write application-specific help here. >>

Find command (Edit menu)

Use this command to search the Edit Pane for a specific string. Label Wizard displays the Find dialog box as a response to this command.

Find dialog box



The following options are available:

Find What

Type the text you want to find.

Match Case

Select to match capitalization exactly.

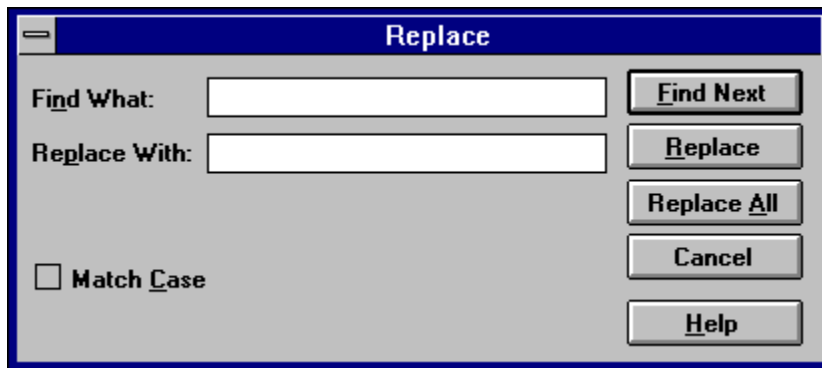
Find Next

Click to search for the next instance of the search text.

Replace command (Edit menu)

Use this command to replace a specific string with a different string in the Edit Pane. Label Wizard displays the Replace dialog box as a response to this command.

Replace dialog box



The following options are available:

Find What

Type the text you want to find.

Replace With

Type the text you want to replace the found text with.

Match Case

Select to match capitalization exactly.

Find Next

Click to search for the next instance of the search text.

Replace

Click to replace the highlighted found text.

Replace All

Click to replace all instances of the found text with the replace text.

Select All command (Edit menu)

Use this command to select all the text contained within the Edit Pane.

Repeat command (Edit menu)

Use this command to repeat the last editing command carried out. The Repeat menu item changes to Can't Repeat if you cannot repeat your last action.

Shortcut

Key: F4

Clear command (Edit menu)

<< Write application-specific help here. >>

Clear All command (Edit menu)

<< Write application-specific help here. >>

Next Pane command (Window menu)

Use this command to switch to the next pane.

Shortcut

Key: F6.

Prev Pane

<< Write application-specific help here. >>

Split command (Window menu)

Use this command to activate the split bar between the Edit Pane and the Label Pane. This allows you to resize the relative size of the two panes with the keyboard. You can also use the mouse to select the split bar and resize the relative size of the two panes.

Modifying the Document

<< Write application-specific help here that provides an overview of how the user should modify a document using your application.

If your application supports multiple document types and you want to have a distinct help topic for each, then use the help context i.d. generated by running the MAKEHELP.BAT file produced by AppWizard. Alternatively, run MAKEHM as follows:

```
makehm IDR_HIDR_,0x2000 resource.h
```

If the IDR_ symbol for one of your document types is, for example, IDR_CHARTTYPE, then the help context i.d. generated by MAKEHM will be HIDR_CHARTTYPE.

Note, AppWizard defines the HIDR_DOC1TYPE help context i.d. used by this help topic for the first document type supported by your application. AppWizard produces an alias in the .HPJ file for your application, mapping HIDR_DOC1TYPE to the HIDR_ produced by MAKEHM for that document type. >>

No Help Available

No help is available for this area of the window.

No Help Available

No help is available for this message box.

<< If you wish to author help specific to each message box prompt, then remove the AFX_HIDP_xxx values from the [ALIAS] section of your .HPJ file, and author a topic for each AFX_HIDP_xxx value. For example, AFX_HIDP_INVALID_FILENAME is the help topic for the Invalid Filename message box. >>

Print command (File menu)

Use this command to print a document. This command presents a Print dialog box, where you may specify the range of pages to be printed, the number of copies, the destination printer, and other printer setup options.

Shortcuts

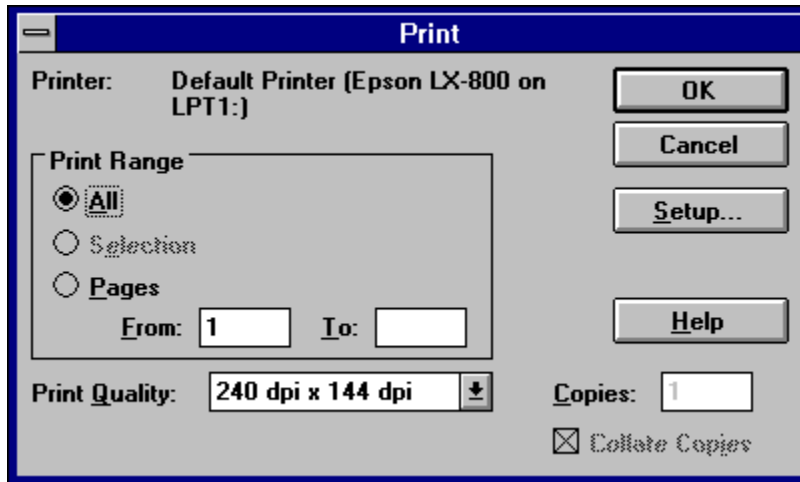
Toolbar:



Keys:

CTRL+P

Print dialog box



The following options allow you to specify how the document should be printed:

Printer

This is the active printer and printer connection. Choose the Setup option to change the printer and printer connection.

Setup

Displays a [Print Setup dialog box](#), so you can select a printer and printer connection.

Print Range

Specify the pages you want to print:

All Prints the entire document.

Selection Prints the currently selected text.

n

Pages Prints the range of pages you specify in the From and To boxes.

Copies

Specify the number of copies you want to print for the above page range.

Collate Copies

Prints copies in page number order, instead of separated multiple copies of each page.

Print Quality

Select the quality of the printing. Generally, lower quality printing takes less time to produce.

Print Progress Dialog

The Printing dialog box is shown during the time that Label Wizard is sending output to the printer. The page number indicates the progress of the printing.

To abort printing, choose Cancel.

Print Preview command (File menu)

Use this command to display the active document as it would appear when printed. When you choose this command, the main window will be replaced with a print preview window in which one or two pages will be displayed in their printed format. The Print Preview toolbar offers you options to view either one or two pages at a time; move back and forth through the document; zoom in and out of pages; and initiate a print job.

Shortcut

Toolbar:



Print Preview toolbar



The print preview toolbar offers you the following options:

Print

Bring up the print dialog box, to start a print job.

Next Page

Preview the next printed page.

Prev Page

Preview the previous printed page.

One Page / Two Page

Preview one or two printed pages at a time.

Zoom In

Take a closer look at the printed page.

Zoom Out

Take a larger look at the printed page.

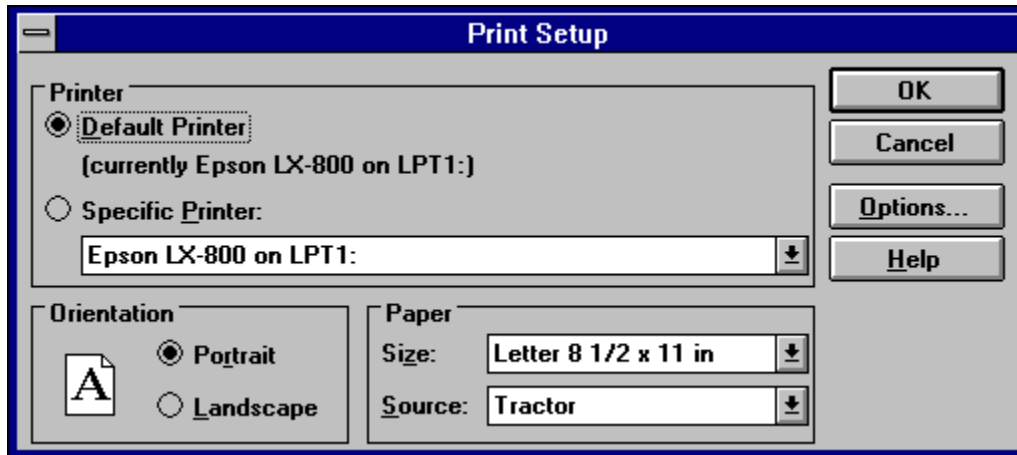
Close

Return from print preview to the editing window.

Print Setup command (File menu)

Use this command to select a printer and a printer connection. This command presents a Print Setup dialog box, where you specify the printer and its connection.

Print Setup dialog box



The following options allow you to select the destination printer and its connection.

Printer

Select the printer you want to use. Choose the Default Printer; or choose the Specific Printer option and select one of the current installed printers shown in the box. You install printers and configure ports using the Windows Control Panel.

Orientation

Choose Portrait or Landscape.

Paper Size

Select the size of paper that the document is to be printed on.

Paper Source

Some printers offer multiple trays for different paper sources. Specify the tray here.

Options

Displays a dialog box where you can make additional choices about printing, specific to the type of printer you have selected.

Network...

Choose this button to connect to a network location, assigning it a new drive letter.

Page Setup command (File menu)

<< Write application-specific help here. >>

Overview

Welcome to Label Wizard. Label Wizard is an all purpose label utility program. With Label Wizard you will be able to create any type of label you desire. The program is only limited by the label template files you have. Included in the registered copy is a text file describing the Label Wizard Template language called LWTLANG.TXT. By reading LWTLANG.TXT and examining the template files included you should be able to create your own template files. To get the most out of this software I do suggest that you go through the [Guide to Label Wizard](#).

See also...

[Register Label Wizard](#)

Statement of Disclaimer

Frank A. Pellegrino, the author of Label Wizard, hereby disclaims all warranties relating to this software, whether expressed or implied, including without limitation any implied warranties of merchantability or fitness for a particular purpose. The author will not be liable for any special, incidental, consequential, indirect or similar damages due to loss of data or any other reason, even if the author or an agent of the author has been advised of the possibility of such damages. In no event shall the author's liability for any damages ever exceed the price paid for the license to use the software, regardless of the form of the claim. The person using the software bears all risk as to the quality and performance of the software.

What's New: Version History

Version 2.0

The Panel menu has changed and the Clone menu has been added.

You now have a right mouse button menu for the Edit Pane and a CTRL right mouse button information menu for the panels.

Most importantly you have the ability to create your own template files (read LWTLANG.TXT included in the registered version) and the ability to work with different types of labels.

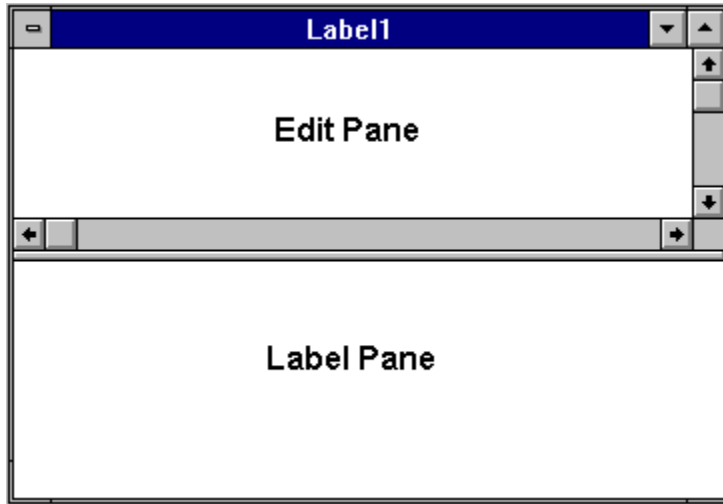
Why the jump in version numbers?

There have been a lot of revisions since the release of version 1.0, none that were distributed publicly. A version number below 2.0 would not accurately reflect the increased flexibility Label Wizard 2.0 possesses.

Version 1.0

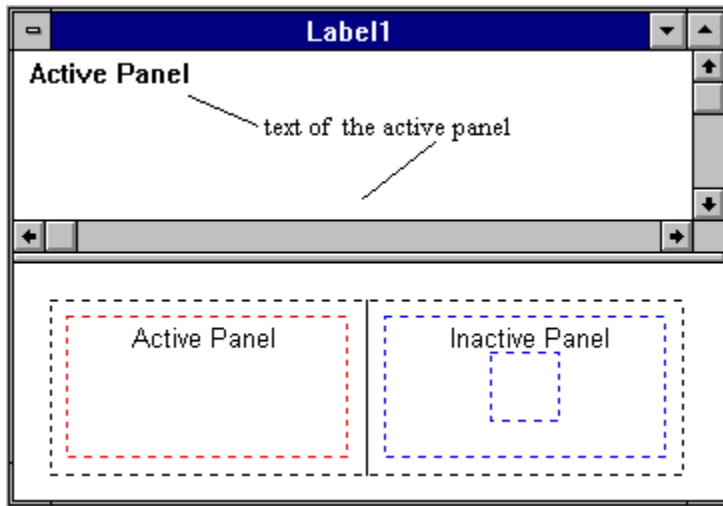
First publicly distributed version of Label Wizard.

The Document Window



Label Wizard's document window is split into two panes. The top pane is the Edit Pane. The bottom pane is the Label Pane.

Edit Pane



The Edit Pane contains the text of the active panel. To select the Edit Pane you must click your cursor within the Edit Pane. You can use the Edit menu commands to edit the text in the Edit Pane. As you type text into the Edit Pane, the active panel is updated.

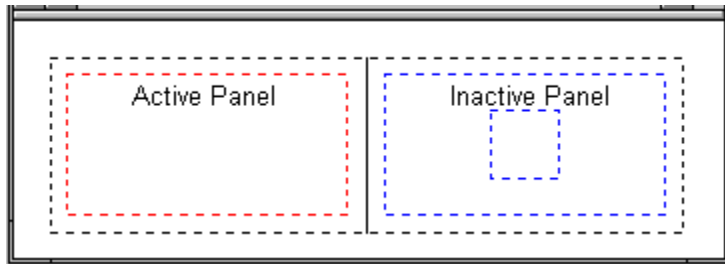
With the right mouse button clicked within the Edit Pane, you can pull down a compact pop-up version of the Edit menu. You can select the menu items with either the left or right mouse button. To cancel the pull down menu you can either press the <ESC> key or click outside the menu with the left mouse button.

C ut	Ctrl+X
C opy	Ctrl+C
P aste	Ctrl+V
S elect A ll	

See also...

Label Pane

Label Pane



The Label Pane contains the view to your Label Wizard document. It is from this pane that you are able to print and print preview your label. You also use this view to navigate through your label.

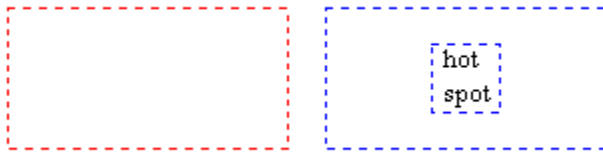
MUST SEE:

What exactly is a label?

What exactly is a label?

In Label Wizard, a label is a collection of text panels and borders.

Panels

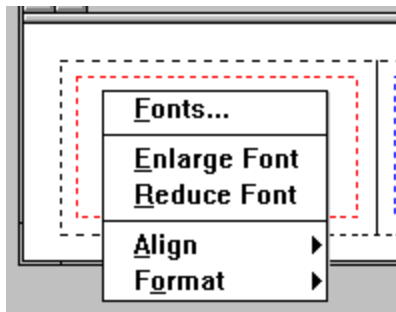


Panels are the rectangular dotted boxes that hold your text. You can only edit one panel at a time. This panel is the active panel. You can change the text it contains by editing it in the Edit Pane. You can change the appearance of the panel's text by using the command in the Panel menu.

Navigation

To select a panel (make it the active panel), you click on it with the left mouse button, within its boundaries. The area you click within, to activate a panel, is its selection boundary. Some panels have a restricted selection boundary. This restricted boundary is called a hotspot. To select panels with a hotspot you must click within the hotspot's boundary. Hotspots allow overlapping panels to have a unique selection boundary. Hotspots usually appear as smaller rectangles within a panel.

With the right mouse button clicked within a panel's selection boundary, you can pull down a compact pop-up version of the Panel menu. You can also select a panel with the right mouse button. You can select the menu items with either the left or right mouse button. To cancel the pull down menu you can either press the <ESC> key or click outside the menu with the left mouse button.

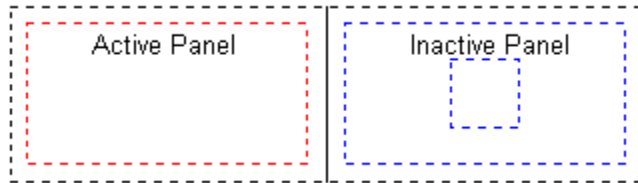


If you hold down the CTRL key and press the right mouse button a information menu will pop up. Contained within the information menu is the current panel's name, the font and point size, and the left and right margin settings. You should use this to save time from calling up the Font dialog box and Margin dialog box just to find out the settings. You should also take note of the panel's name. Panel's with the same name are duplicate panels. Cloning functions from the Clone menu can operate on those members.

See also...

Borders

Active Panel



When you start a new label or open a previously saved label, the first panel is made the active panel. The active panel is the one that is affected by all the Panel menu commands.

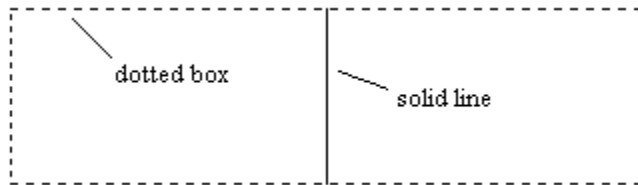
In Label Wizard's default settings, the active panel is the red panel. The inactive panels are the blue panels.

See also...

[Changing the Default Colors](#)

[Changing the Default Font](#)

Borders



Borders are the lines and boxes that form the boundaries of your label.

See also...

[Panels](#)

Changing the Default Colors

To change the default colors you have to edit Label Wizard's .INI file. You should find it in your Windows directory. The filename should be LABELWIZ.INI.

With a text editor you will be able to edit two lines in the file. It should look something like this:

```
[Settings]
FocusColor=255,0,0
UnFocusColor=0,0,255
```

The three numbers are the red, green and blue (RGB) color values of the focused panel (active panel) and the unfocused panel. You will be limited by the amount of colors your video driver supports.

In case you want the default colors back, all you have to do is delete the two lines.

Changing the Default Font

To change the default font you have to edit Label Wizard's .INI file. You should find it in your Windows directory. The filename should be LABELWIZ.INI.

With a text editor you will be able to edit the line in the file. It should look something like this:

```
[Settings]
Font=MS Sans Serif,10,0
```

```
Font={font name},{font point size (2-360)}, {font attribute (0-15)}
```

font attribute values

```
regular=0
bold=1
italic=2
underline=4
strikeout=8
```

You can change the font, its point size, and its attribute on this line. The font name should be the name of a font loaded on your system. The point size can be from 2 to 360. The font attribute controls the style of the font. Just add values in the font attribute values table. If you want the default font to be bold and italic, then the font attribute number is 3. When you start a new label, the default font and its point size will be loaded into each panel. In case you want the default font back, all you have to do is delete the line.

Registering Label Wizard

Label Wizard is user supported (SHAREWARE) software and is not free. Users may evaluate Label Wizard for a maximum of 30 days, after which a registration fee must be paid, or Label Wizard should be deleted from your system. You are free to give out copies of the shareware version of Label Wizard and are encouraged to do so, so long as the following files are contained in the archive:

LABELWIZ.EXE	
LABELWIZ.HLP	
LABELWIZ.LWT	
README.1ST	
*****.LWT	initial label templates (audio cassette (J-Card) label...)
*****.LWL	sample files
SAMPLES.TXT	
FUTURE.TXT	
FILE_ID.DIZ	

Registering Label Wizard enables and encourages the author to continue upgrading this program. Registered users will no longer see the introduction dialog box. Registered users also receive the latest registered version of Label Wizard in their choice of diskette size, notices of future updates when they become available, and extended product support. In the registered version you also get the documentation to create your own label templates and I'll supply you with several more label templates. To register just fill out the [Registration Form](#).

Registration Form

Ordering by check or money order: To order send this order form and a check or money order to:

Frank A. Pellegrino
1412 Avenue M - Suite 2213
Brooklyn, NY 11230

To print this order form, click on File | Print Topic. **Payments must be in US dollars drawn on a US bank.** Alternately, you can send international postal money orders in US dollars. **For orders outside the US add an extra \$5.**

Please check one: 5.25" Disk ___ 3.5" Disk ___ Either size ___

Label Wizard Single Copy ___ copies at **\$20** each = ___
write for information on site license price structure.

Total payment = ___

Prices guaranteed through February 1994.

Name: _____ Date: _____

Company: _____

Address: _____

City, State, Zip: _____

Country: _____

Day Phone: _____ Eve: _____

Electronic Mail address: _____

How did you hear about Label Wizard? _____

Comments:

Registration Profile

In order to successfully complete this section you must type in your registration name, company and number exactly as it was given to you. The name and company were taken off your order form. If for any reason you cannot get past the Registration Profile with your information then get in touch with me.

see [Obtaining Product Support](#)

Obtaining Product Support

Product support may be obtained by any of the following:

US mail address:

Frank A. Pellegrino
1412 Avenue M - Suite 2213
Brooklyn, NY 11230

Electronic mail address (INTERNET): **v088mdnl@ubvms.cc.buffalo.edu**
(E-Mail address is good until May 1994)

In all correspondences, please put the name of the program in the subject line for E-mail and on the envelope for postal mail. The best way to get in touch with me is through E-Mail.

I'd like to hear any opinion or suggestion you have about Label Wizard. If you want to see certain features in the next version, write to me about it.

I'd also like to hear about any bugs you find in the program. Just fill out the [Bug Report Form](#) and send it to the address above.

See also...

[Register Label Wizard](#)

Bug Report Form

Name: _____ Date: _____

Company: _____

Address: _____

City, State, Zip: _____

Country: _____

Day Phone: _____ Eve: _____

Electronic Mail address: _____

Registered User Number: _____

Version of Label Wizard: _____

Your computer system type and configuration: _____

Bug and how it happened:

About the Author

The author of Label Wizard is Frank A. Pellegrino, a 20 year old programming his summer vacation away. He is a senior Electrical Engineering student at the University of Buffalo. This does mean a busy year for him, and of course he will be graduating this spring. When he is not studying in Buffalo, Frank is back home in his hometown of Brooklyn, New York. In his spare time he enjoys listening to music, writing his own music, and programming. If you attended school with him, he'd be more than happy to receive mail from you.

Enough about me. Time to glorify this program.

Label Wizard is the product of one man. The idea of printing labels is not new. In fact this program could have ended up as an inflexible audio cassette label program. That's how it started out in 1992. I was just learning how to write programs for Windows. There was this program that I started off trying to improve. I never did finish or release any of it. Then in 1993, I purchased a better software development kit, which I won't mention here, and started on planning to port my older program. That didn't happen because one night, a C++ object oriented generalization of my program popped into my head, and is now on your computer.

I'd like to take this space to thank my parents, and other relatives who have been supportive to me over the years. I'd like to thank my friends for being around. And I hope that I will be able to supply you with future versions of Label Wizard.

State University of New York at Buffalo

Buffalo, New York: The home of the Buffalo Bills (the three time AFC Champions and unfortunate three time Super Bowl losers) and famous Buffalo wings (chicken wings to most folks out there).

The thing most students in college have found a way around.

Schools Attended

P.S. 186	'77-'83
I.S. 227	'83-'87
Stuyvesant H.S.	'87-'90

Music I listen to:

Roger Taylor, Queen, The Beatles, The Cross, John Lennon, Brian May, David Bowie, Led Zeppelin, Robert Plant, Frank Zappa, Eric Clapton, The Who, Jimi Hendrix, The Doors, Alice Cooper, The Pixies, The Dead Milkmen, and other popular music.

Beta Testers: Vito, Joe and Anthony

College friends: Big Mike and his blender, Steve and his musicianship, Craig and his hair, Jesse and his collection of bones, Mike and his Mei, and more Mike's, Dave, Dave, Chris (woohoo), the woohoo girls: Gretchen, Salleigh and Wendy, Todd, Tom (click), Tom, Dean the organizer, Andy the detainee, Raymond, Ray, Morris, Dewey and many more I don't remember off hand, you know who you are.

Big thanks to all of those professors and administrators at U.B. who have helped me in any way.

Band: no official name, no singer, just music: Vito, Joe and myself.

Band away from home: music and lyrics, all for fun: Steve, sometimes Mike, and myself.

Band on the Run: That's Wings silly.

Vito

Vito is my cousin and he plays the guitar and bass. Vito would like the band's name to be Excalibur.

Joe

Joe is my brother and he plays the drums. He's currently attending the College of Staten Island. Joe plans on majoring in architecture.

Frank

Frank (me) plays the guitar and bass. Frank is currently playing bass with the band. This will change if they finally get a bassist/singer for the band. All the band members write the music, remember there are no lyrics. Frank would like the band's name to be Torque. With his band away from home Frank writes the music and Steve the lyrics.

Roger Taylor



Roger Taylor is the drummer and chief background vocalist of Queen. He is responsible for writing such songs as 'I'm In Love With My Car' and 'Radio Ga Ga' and most notably singing the high 'me' part in 'Bohemian Rhapsody'. In the early eighties he released two solo albums that are impossible to find (they haven't been released on CD yet): 'Fun In Space' and 'Strange Frontier'. They are two excellent albums. Roger performed on most, if not all, of the instruments on those two albums. He also sang of course. Most people say he sounds a bit like Rod Stewart.

In the late eighties he formed a side band called The Cross, and was the lead singer and guitarist. They released three CD's before losing their record contract. I guess there wasn't enough public interest in his solo material. I luckily obtained those three CD's.. He recently recorded a single with a Japanese performer named Yoshiki, but I haven't gotten my hands on it yet. Soon he should be releasing a new solo album. Depending on distribution, his album may make it to the US. Hopefully the promotion for this album is better than his previous albums. Most likely not, and once again the US will have no clue who Roger Taylor is... unless they all read this.

